

**Richmond Local Plan 'The best for our borough'
Regulation 19 Policies Map**

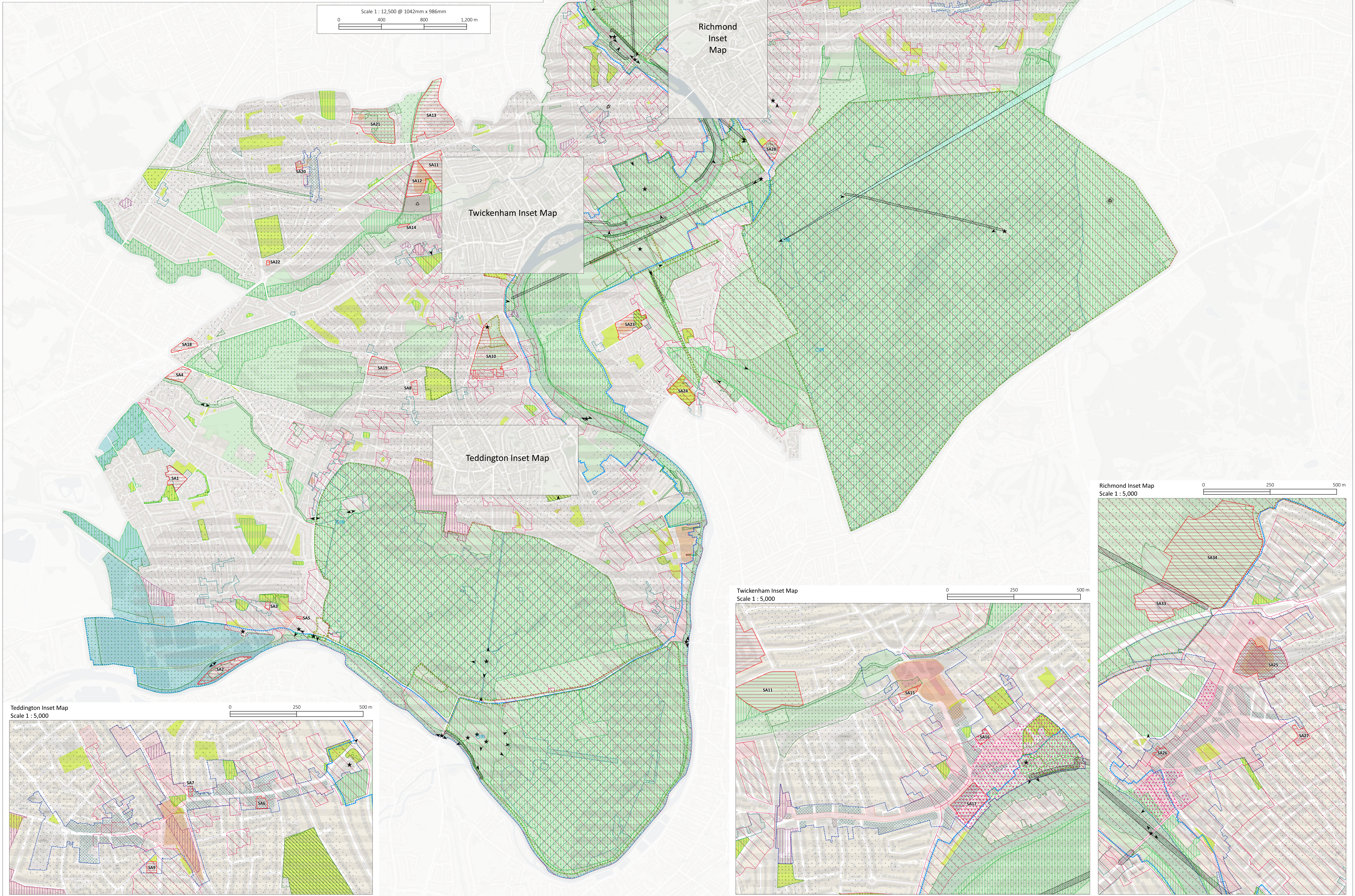
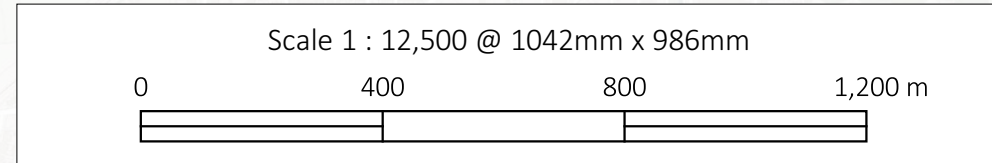
December 2023

Created in December 2023 to accompany the submission of the
Publication (Regulation 19) Local Plan to the Secretary of State

Spatial Planning and Design
Civic Centre
44 York Street
London, TW1 3BZ

www.richmond.gov.uk
LocalPlan@richmond.gov.uk

- Policy Legend**
- Borough Boundary
 - Green Belt (Policy 25, National Policy)
 - Metropolitan Open Land (Policy 35)
 - Other Open Land of Townscape Importance (Policy 36)
 - Local Green Space (Policy 35)
 - Historic Parks and Gardens (Policy 29)
 - Public Open Space (Policy 37)
 - Public Open Space Deficiency Area (Policy 37)
 - Thames Policy Area (Policy 40)
 - Site of Special Scientific Interest (Policy 39)
 - Site of Importance for Nature Conservation (Policy 39, Appendix 4)
 - Site of Importance for Nature Conservation Candidates (Policy 39, Appendix 4)
 - Town Centre Boundary (Policy 18, Appendix 1)
 - Primary Shopping Area (Policy 18, Appendix 1)
 - Local Centre Boundary (Policy 17, Appendix 1)
 - Cultural Quarter (Policy 18)
 - Site Allocation
 - Area for Incremental Intensification (Policy 16)
 - Key Business Area (Policy 23)
 - Locally Important Industrial Land and Business Park (Policy 24)
 - Tall Building Zone (Policy 45, Appendix 3)
 - Mid-Rise Building Zone (Policy 45, Appendix 3)
 - Conservation Area (as at December 2023) (Policy 29)
 - Scheduled Monument (Policy 29)
 - Views (Policy 31)
 - Landmark (Policy 31)
 - Waste Site (Policy 7, WLWP 2)
- Area at risk from flooding: please check with the Environment Agency at www.gov.uk/government/organisations/environment-agency and www.richmond.gov.uk/flood_risk_assessment
- Waste Sites (Policy 7): please check the Council's Authority Monitoring Report for existing waste sites.
- Archaeological Priority Area (Policy 33): please check with Historic England at www.historicengland.org.uk and search for APAs.
- Restriction Zones for fast food takeaways (Policy 51): within 400 metres of boundaries of a primary or secondary school, please check Council's latest maps.
- Site Allocations apply to the specific site. All policies apply to the whole plan unless specifically stated otherwise.
- The Ham & Petersham Neighbourhood Plan (2019) also applies in the Ham and Petersham Neighbourhood Area- see www.richmond.gov.uk/ham_and_petersham_neighbourhood_planning
- © Crown copyright and database rights 2023 Ordnance Survey 1000019441

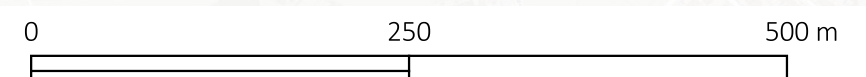


Richmond
Inset
Map

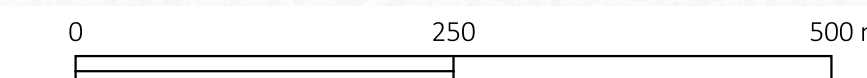
Twickenham
Inset
Map

Teddington
Inset
Map

Richmond Inset Map
Scale 1 : 5,000



Twickenham Inset Map
Scale 1 : 5,000



Teddington Inset Map
Scale 1 : 5,000

