





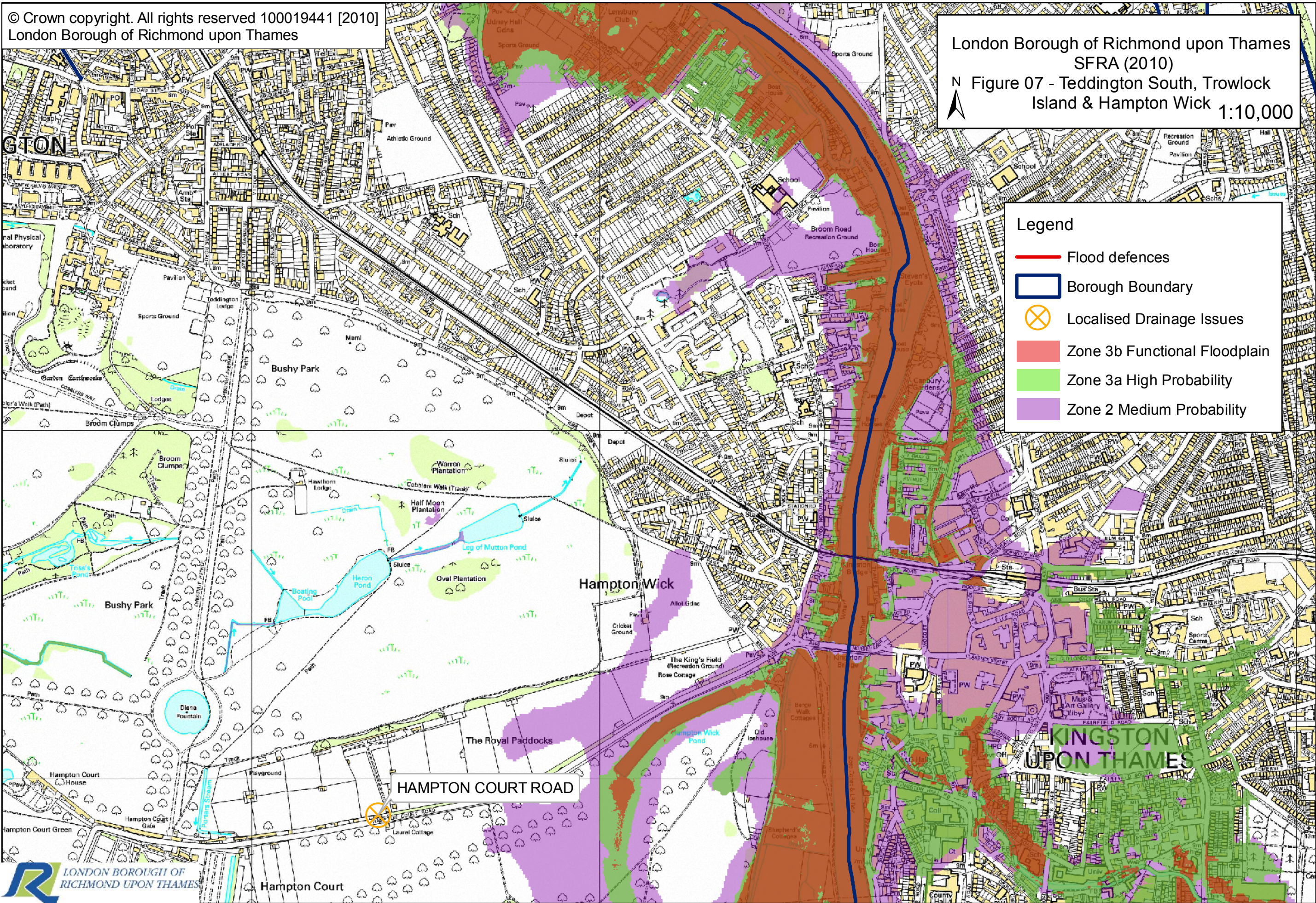


© Crown copyright. All rights reserved 100019441 [2010]  
London Borough of Richmond upon Thames

London Borough of Richmond upon Thames  
SFRA (2010)  
N Figure 07 - Teddington South, Trowlock  
Island & Hampton Wick 1:10,000

**Legend**

-  Flood defences
-  Borough Boundary
-  Localised Drainage Issues
-  Zone 3b Functional Floodplain
-  Zone 3a High Probability
-  Zone 2 Medium Probability



HAMPTON COURT ROAD