

ROAD TRAFFIC REGULATION ACT 1984

THE LONDON BOROUGH OF RICHMOND UPON THAMES (WAITING AND LOADING RESTRICTION) (CIVIL ENFORCEMENT AREA) (AMENDMENT No. **) ORDER 201*
THE LONDON BOROUGH OF RICHMOND UPON THAMES (PROHIBITION OF STOPPING OUTSIDE SCHOOLS) (AMENDMENT No. **) ORDER 201*

**BISHOPS CLOSE, HAM
BLUEFIELD CLOSE, HAMPTON
BUCKINGHAM ROAD, HAMPTON
CARDINALS WALK, HAMPTON
COLNE ROAD, TWICKENHAM
HAM COMMON, HAM
LOWER GROVE ROAD, RICHMOND
PARK ROAD, TEDDINGTON
PETERSHAM ROAD, RICHMOND
THE AVENUE, HAMPTON**

BATCH 85B

(Reference 18/142)

1. The Council of the London Borough of Richmond upon Thames propose to make the above Order under sections 6, and 124 of, and Part IV of Schedule 9 to, the Road Traffic Regulation Act 1984, as amended.
2. The general effect of the **Waiting and Loading Restriction Amendment Order** will be to introduce and revoke lengths of yellow lines as set out in the schedule to this notice.
3. The general effect of the Prohibition of Stopping outside Schools Order is to introduce a length of School Keep Clear Markings as detailed in the Schedule to this Notice.
4. Copies of the proposed Order, plans showing the location and effect of the proposals and the Council's Statement of Reasons for proposing to make the Order: -
 - (a) can be inspected, quoting Reference 18/142, at the Civic Centre (Central Reception, ground floor), 44 York Street, Twickenham between 9.15am and 5pm on Mondays to Fridays, except for Bank and other public holidays; and
 - (b) may be viewed on the Council's web-site at http://www.richmond.gov.uk/public_notices
5. Persons wishing to object to or support the proposals or any part thereof should write to the Head of Engineering, Traffic and Parking Policy, London Borough of Richmond upon Thames, Civic Centre, 44 York Street, Twickenham TW1 3BZ within 21 days of the date of this Notice giving the grounds of their objection. Representations may also be sent by email to highwaysandtransport@richmondandwandsworth.gov.uk

NICK O'DONNELL
Assistant Director – Traffic and Engineering
Civic Centre, 44 York Street, Twickenham TW1 3BZ

**SCHEDULE**

Street	Details
Bluefield Close, Buckingham Road and The Avenue, Hampton	To introduce double yellow lines (“no waiting at any time”) across the arms of the junction at Bluefield Close, Buckingham Road and The Avenue, Hampton.
Cardinals Walk, Hampton	To introduce footway parking on both sides of the east to west arm, between its junctions with Warwick Close and the north to south arm and to introduce double yellow lines (“no waiting at any time”) across two footway crossovers.
Colne Road, Twickenham	To introduce school keep clear markings operating Monday to Friday between 8am and 5pm on the southern side outside Twickenham Primary Academy. The markings will be some 25.5 metres in extent.
Bishops Close, Ham, Ham Common, Ham and Petersham Road, Richmond	To introduce lengths of double yellow line (“no waiting at any time”) on the western side of Petersham Road across the junction of Ham Common (opposite Sudbrook Lodge) and in Ham Common, on both sides at its junction with Petersham Road; the lines will extend into Bishops Close at its junction with Ham Common.
Lower Grove Road, Richmond	To introduce lengths of double yellow line (“no waiting at any time”) in the access road to the cemetery.
Park Road, Teddington	To extend double yellow lines (“no waiting at any time”) on its northern kerb-line to the west of the junction with Clarence Road by 10 metres.
Petersham Road, Petersham	To extend the existing double yellow lines (“no waiting at any time”) at the junction of Sandy Lane so that terminates 7.6 metres north of the southern boundary of No 241 Petersham Road.

Dated 29 June 2018

TRAFFIC MANAGEMENT ORDER

THE LONDON BOROUGH OF RICHMOND UPON THAMES (WAITING AND LOADING RESTRICTION) (CIVIL ENFORCEMENT AREA) (AMENDMENT No. **) ORDER 201*

Made: ** *** 201*

Coming into operation: ** *** 201*

The Council of the London Borough of Richmond upon Thames, having consulted the Commissioner of Police of the Metropolis, in exercise of the powers conferred by Sections 6 and 124 of, and Part IV of Schedule 9 to, the Road Traffic Regulation Act 1984(**a**), as amended, and all other enabling powers hereby make the following Order—

1. This Order shall come into operation on ** *** 201* and may be cited as the London Borough of Richmond upon Thames (Waiting and Loading) (Civil Enforcement Area) (Amendment No. **) Order 201*
2. (1) In this Order the expression “enactment” means any enactment whether public, general or local and includes any order, bye-law, rule, regulation, scheme or other instrument having effect by virtue of an enactment.
 - (2) Any reference in this Order to any enactment shall be construed as a reference to that enactment as amended, applied, consolidated, re-enacted by or as having effect by virtue of any subsequent enactment.
 - (3) The Interpretation Act 1978(**b**) shall apply for the interpretation of this Order as it applies for the interpretation of an Act of Parliament.
3. Without prejudice to the validity of anything done or to any liability incurred in respect of any act or omission before the coming into operation of this Order, the London Borough of Richmond upon Thames (Waiting and Loading Restriction) (Civil Enforcement Area) (Consolidation No. 8) Order 2008(**c**), as amended, shall have effect as though
 - (a) for the items numbered 66A, 307, 519, 534 and 705B in Schedule 1 to that Order there were substituted the items similarly numbered and set out in columns 1, 2 and 3 of Schedule 1 to this Order;
 - (b) there was added to Schedule 1 to that Order the items numbered 67A, 87C and 103B and set out in columns 1, 2 and 3 of Schedule 2 to this Order;

Dated ** *** 201*

Assistant Director – Traffic and Engineering
(The officer appointed for this purpose)

(a) 1984 c. 27. (b) 1978 c. 30.
(c) 2008/38 The relevant amending Orders are

SCHEDULE 1
(See Article 3(a))

ITEMS TO BE SUBSTITUTED IN SCHEDULE 1 [to 2008/38]
RESTRICTED STREETS

1. Item	2. Street	3. Prescribed hours - see Schedule 3 [to 2008/38]
66A	Bishops Close, Ham: <ul style="list-style-type: none"> (a) the north-east side, from a point 6.5 metres south-east of the common boundary of Nos 39/40 and 41/42 Bishops Close, south-eastwards for a distance of 16 metres. (b) the south-west side, from a point 6 metres south-east of the common boundary of Nos 1/2 and 3/4 Bishops Close, south-eastwards for a distance of 23 metres; (c) the north-west side, from the northern kerb-line of Ham Common, northwards for a distance of 10 metres; (d) the south-east side, from the northern kerb-line of Ham Common, northwards for a distance of 5 metres. 	<p align="center">A</p> <p align="center">A</p> <p align="center">A</p> <p align="center">A</p>
307	Ham Common, Ham: <ul style="list-style-type: none"> (a) the south-western arm: <ul style="list-style-type: none"> (i) the north-east side: <ul style="list-style-type: none"> (A) from the western kerb-line of Upper Ham Road, Ham to a point 17 metres north-west of that kerb-line; (B) from a point 115 metres south-east of the extended south-eastern kerb-line of Langham House Close, Ham south-eastwards for a distance of 15 metres; (ii) the south-west side: <ul style="list-style-type: none"> (A) from the western kerb-line of Upper Ham Road north-westwards for a distance of 24 metres; (B) from a point 10 metres south-east of the south-eastern kerb-line of New Road, Ham to a point 10 metres north-west of the north-western kerb-line of New Road; 	<p align="center">A</p> <p align="center">A</p> <p align="center">A</p> <p align="center">A</p>

1. Item	2. Street	3. Prescribed hours - see Schedule 3 [to 2008/38]
	<p>(iii) from a point 10 metres south-n east of the south-eastern kerb-line of Langham House Close to a point 10 metres north-west of the north-western kerb-line of Langham House Close;</p> <p>(b) the northern arm:</p> <p>(i) the north-east side:</p> <p>(A) from the extended southern kerb-line of the north-eastern arm south-eastwards for a distance of 27 metres;</p> <p>(B) from the western kerb-line of Petersham Road, Ham westwards for a distance of 47 metres;</p> <p>(ii) the south-west side, from the western kerb-line of Petersham Road westwards for a distance of 10 metres.</p> <p>(c) the north-eastern arm:</p> <p>(i) from its junction with Martingales Close and the northern side of Ham Common to a point 15 metres west of the common boundary of "Hardwicke House", 58 Ham Common and "South Lodge", 59-66 Ham Common;</p> <p>(ii) the north side, from the western kerb-line of Petersham Road westwards to a point 10 metres west of the western kerb-line of Bishops Close, Ham;</p> <p>(iii) the south side, from the western kerb-line of Petersham Road westwards for a distance of 14.5 metres.</p> <p>Lower Grove Road, Richmond:</p> <p>(a) the north to south arm, the west side,</p> <p>(i) from its junction with the eastern kerb-line of Queens Road, Richmond to a point 15 metres south of the southern kerb-line of the east to west arm of Lower Grove Road;</p> <p>(ii) from a point 1 metre south of the access to Broadhurst Close, To a point 1 metre north of the access to Broadhurst Close.</p> <p>(b) the north to south arm, the east side:</p> <p>(i) from its junction with the eastern kerb-line of Queens Road southwards for a distance of 40 metres;</p>	<p>A</p> <p>A</p> <p>A</p> <p>A</p> <p>A</p> <p>A</p> <p>A</p> <p>A</p> <p>A</p> <p>A</p>

1. Item	2. Street	3. Prescribed hours - see Schedule 3 [to 2008/38]
519	<p>Park Road, Teddington:</p> <ul style="list-style-type: none"> (ii) from a point 10 metres north of the northern kerb-line of the east to west arm of Lower Grove Road southwards to a point 15 metres south of the southern kerb-line of that arm; (iv) the access road into Richmond Cemetery, immediately to the north of the Richmond Cemetery Lodge: <ul style="list-style-type: none"> (A) the north side, for a distance of 20 metres from the entrance to the cemetery; (B) the south side. (c) the east to west arm; (d) the access road to the cemetery (a) the east and north side: <ul style="list-style-type: none"> (i) from its junction with the southern kerb-line of High Street, Teddington to the southern kerb-line of the northern access the "Park Lodge Hotel", Park Road; (ii) from the southern kerb-line of the northern access to the "Park Lodge Hotel" southwards for a distance of 23 metres; (iii) from the northern kerb-line of the southern access to the "Park Lodge Hotel" to a point 5.5 metres south of the southern kerb-line of Adelaide Road, Teddington; (iv) from a point 5.5 metres south of the southern kerb-line of Adelaide Road to a point 19 metres north of the northern kerb-line of Albert Road, Teddington; (v) from a point 19 metres north of the northern kerb-line of Albert Road to a point 5 metres south of the southern kerb-line of Albert Road; (vi) from a point 5 metres south of the southern kerb-line of Albert Road to a point 10 metres north of the northern kerb-line of Clarence Road, Teddington; (vii) from a point 10 metres north of the northern kerb-line of Clarence Road to a point 10 metres south of the southern kerb-line of Clarence Road; 	<p>A</p> <p>A</p> <p>A</p> <p>A</p> <p>A</p> <p>Z4</p> <p>A</p> <p>Z4</p> <p>A</p> <p>Z4</p> <p>A</p>

1. Item	2. Street	3. Prescribed hours - see Schedule 3 [to 2008/38]
	(viii) from a point 10 metres south of the southern kerb-line of Clarence Road southwards for a distance of 12.7 metres;	Z4
	(ix) from a point 22.7 metres south of the southern kerb-line of Clarence Road southwards for a distance of 19 metres;	A
	(x) from a point 41.7 metres south of the southern kerb-line of Clarence Road southwards for a distance of 20 metres;	Z4
	(xi) from point 10 metres west of the western kerb-line of Avenue Gardens to a point 10 metres east of the eastern kerb-line of Avenue Gardens;	A
	(xii) from point 10 metres west of the western kerb-line of Avenue Road, Teddington to a point 17.2 metres east of the eastern kerb-line of Avenue Road;	A
	(xiii) from the western kerb-line of Clarence Road westwards for a distance of 20 metres;	A
	(b) the west and south side:	
	(i) from its junction with the southern kerb-line of Broad Street, Teddington southwards to a point 1.5 metres north of the party wall of Nos 4 and 6 Park Road;	A
	(ii) from a point 1.5 metres north of the party wall of Nos 4 and 6 Park Road southwards for a distance of 16.5 metres;	H
	(iii) from a point 15 metres south of the party wall of Nos 4 and 6 Park Road to a point opposite the southern kerb-line of the southern access to the "Park Lodge Hotel";	A
	(iv) from a point opposite the southern kerb-line of the southern access to the "Park Lodge Hotel" southwards for a distance of 23 metres;	Z4
	(v) from a point 23 metres south of a point opposite the southern kerb-line of the southern access to the "Park Lodge Hotel" to a point 8 metres south of the southern extended kerb-line of Adelaide Road;	A
	(vi) from point 8 metres south of the southern extended kerb-line of Adelaide Road southwards for a distance of 32 metres;	Z4

1. Item	2. Street	3. Prescribed hours - see Schedule 3 [to 2008/38]
	(vii) from a point 40 metres south of the southern extended kerb-line of Adelaide Road to a point 15 metres south of the extended southern kerb-line of Albert Road;	A
	(viii) from a point 15 metres south of the extended southern kerb-line of Albert Road southwards for a distance of 25.5 metres;	Z4
	(ix) from a point 40.5 metres south of the extended southern kerb-line of Albert Road southwards for a distance of 7.5 metres;	A
	(x) from a point 26.5 metres north of the extended northern kerb-line of Clarence Road southwards for a distance of 16.5 metres;	Z4
	(xi) from a point 10 metres north of the extended northern kerb-line of Clarence Road to a point 5 metres south of the extended southern kerb-line of Clarence Road;	A
	(xii) from a point 5 metres south of the extended southern kerb-line of Clarence Road southwards for a distance of 11.5 metres;	Z4
	(xiii) from a point 16.5 metres south of the extended southern kerb-line of Clarence Road southwards for a distance of 23 metres;	A
	(xiv) from a point 14 metres north of the southern kerb-line of Maddison Close, Teddington northwards for a distance of 9 metres;	Z4
	(xv) from a point 14 metres north of the southern kerb-line of Maddison Close to a point 23 metres south of the southern kerb-line of Maddison Close.	A
534	Petersham Road, Richmond:	
	(a) from its junction with Hill Rise, Richmond to the north-western kerb-line of Star and Garter Hill, Richmond;	A
	(b) the service road leading to Nos 155 and 155A Petersham Road:	
	(i) the northern side, from the western kerb-line of the main carriageway of Petersham Road eastwards for a distance of 15 metres, to the eastern kerb-line of Tree Close, Petersham;	A
	(ii) the whole of the perimeter of the island site in that access road;	A

1. Item	2. Street	3. Prescribed hours - see Schedule 3 [to 2008/38]
	(iii) the southern side, from the western kerb-line of the main carriageway of Petersham Road eastwards for a distance of 20 metres; (c) the west side, the lay-by to the south of the former "Three Pigeons" public house, excluding the loading place.	A A
	(d) the east side: from its junction with Sudbrook Gardens, northwards for a distance of 195 metres. (d) the west side: (i) from the north-eastern kerb-line of Upper Ham Road, northwards for a distance of 10 metres;	R A
	(iii) from the southern kerb-line of Upper Ham Road, southwards for a distance of 67 metres. (iv) from the northern kerb-line of Ham Common, northwards for a distance of 27 metres; (v) from a point outside the common boundary of Nos 301 and 303 Petersham Road, southwards for a distance of 25 metres. (e) the north-western arm from its junction with Sandy Lane, south-eastwards to a point 7.8 metres north of the southern boundary of No 241 Petersham Road.	A A R A
705B	The Avenue, Hampton: (a) from its junction with Broad Lane, Hampton north-westwards for a distance of 22 metres.	A
	(b) from the south-western kerb-line of Buckingham Road, south-westwards for a distance of 15 metres,	A
	(c) the north-east and south-east sides, from a point 5 metres north of the southern boundary of No 44 The Avenue to the southern kerb-line of Partridge Road;	A
	(d) the south-west and north-west sides, from its junction with Old Farm Road to a point 10 metres north-east of its junction with Bramble Lane.	A

SCHEDULE 2
(See Article 3 (b))

ITEMS TO BE ADDED TO SCHEDULE 1 TO [to 2008/38]

1 Item No.	2 Street	3 Prescribed hours - see Schedule 3
67A	Bluefield Close, Hampton: From the north-eastern kerb-line of Buckingham Road, north-eastwards for a distance of 13 metres,	A
87C	Buckingham Road, Hampton: (a) on the northern side of the cul de sac; (b) on the eastern side of the cul de sac, from a the northern kerb-line of the cul de sac to a point 5 metres north of the southern kerb-line of the cul de sac,	A A
103B	Cardinals Walk, Hampton: From a point 39 metres west of the western kerb-line of Warwick Drive, westwards for a distance of 6 metres/,	A

EXPLANATORY NOTE

(This Note is not part of the Order but is intended to indicate its general purport.)

The purpose of this Order is to introduce waiting restrictions in various lengths of

Bishops Close, Ham
Bluefield Close, Hampton
Buckingham Road, Hampton
Cardinals Walk, Hampton
Ham Common, Ham
Lower Grove Road, Richmond
Park Road, Teddington
Petersham Road, Richmond
The Avenue, Hampton

STATEMENT OF REASONS

THE LONDON BOROUGH OF RICHMOND UPON THAMES (WAITING AND LOADING RESTRICTION) (CIVIL ENFORCEMENT AREA) (AMENDMENT No. **) ORDER 201*
THE LONDON BOROUGH OF RICHMOND UPON THAMES (PROHIBITION OF STOPPING OUTSIDE SCHOOLS) (AMENDMENT No. **) ORDER 201*

The Council receives reports from time to time on matters of road safety caused by parked vehicles and these may come from residents, Councillors, Council officers or bus and emergency services. These matters include poor sight lines at junctions, obstruction of footway crossing points, lack of suitable passing areas and reduced carriageway width restricting or preventing access for vehicles especially emergency service vehicles.

The Waiting and Loading Restriction Order makes certain amendments to lengths of waiting restrictions and introduces lengths of waiting restrictions.

The Prohibition of Stopping Outside Schools Order introduces a length of School Keep Clear Markings outside a school to improve safety for all road users around the school.



TRAFFIC AND TRANSPORT

201* NO. **

TRAFFIC MANAGEMENT ORDER

THE LONDON BOROUGH OF RICHMOND UPON THAMES (PROHIBITION OF STOPPING OUTSIDE SCHOOLS) (AMENDMENT No. **) ORDER 201*

Made: **

Coming into operation: **

The Council of the London Borough of Richmond upon Thames, having consulted the Commissioner of Police of the Metropolis, in exercise of the powers conferred by Sections 6 and 124 of, and Part IV of Schedule 9 to, the Road Traffic Regulation Act 1984(a), as amended, and all other enabling powers hereby make the following Order—

1. This Order shall come into operation on ** and may be cited as the London Borough of Richmond upon Thames (Prohibition of Stopping Outside Schools) (Amendment No. **) Order 201*.
2.
 - (1) In this Order the expression “enactment” means any enactment whether public, general or local and includes any order, bye-law, rule, regulation, scheme or other instrument having effect by virtue of an enactment.
 - (2) Any reference in this Order to any enactment shall be construed as a reference to that enactment as amended, applied, consolidated, re-enacted by or as having effect by virtue of any subsequent enactment.
 - (3) The Interpretation Act 1978(b) shall apply for the interpretation of this Order as it applies for the interpretation of an Act of Parliament.
3. Without prejudice to the validity of anything done or to any liability incurred in respect of any act or omission before the coming into operation of this Order, the London Borough of Richmond upon Thames (Prohibition of Stopping Outside Schools) Order 2012 (c), as amended, shall have effect as though for the item numbered 9A in Schedule 2 to that Order there was substituted the item similarly numbered and set out in columns 1, 2 and 3 to the Schedule to this Order.

Dated **

Assistant Director, Traffic and Engineering
(The officer appointed for this purpose)

(a) 1984 c. 27. (b) 1978 c. 30.
(c) 2012/34 There are no amending Orders.

SCHEDULE
(See Article 3)

ITEM TO BE SUBSTITUTED IN SCHEDULE 2 [to 2012/34]

LENGTHS OF STREET WHERE STOPPING IS PROHIBITED DURING THE HOURS SPECIFIED IN COLUMN 3 EXCEPT ON BANK AND PUBLIC HOLIDAYS, DURING THE MONTH OF AUGUST AND ON 24 TO 31 DECEMBER INCLUSIVE

1 Item No.	2 Street	3 Specified hours - see Notes
9A	COLNE ROAD, TWICKENHAM, the south side: from a point opposite the common boundary of Nos 32 and 34 Colne Road, eastwards for or a distance of 25.6 metres	B

NOTES

- B. The specified hours which apply to this item are between 8am and 5pm on Mondays to Fridays inclusive excluding Bank Holidays, August and 24-31 December inclusive.

EXPLANATORY NOTE

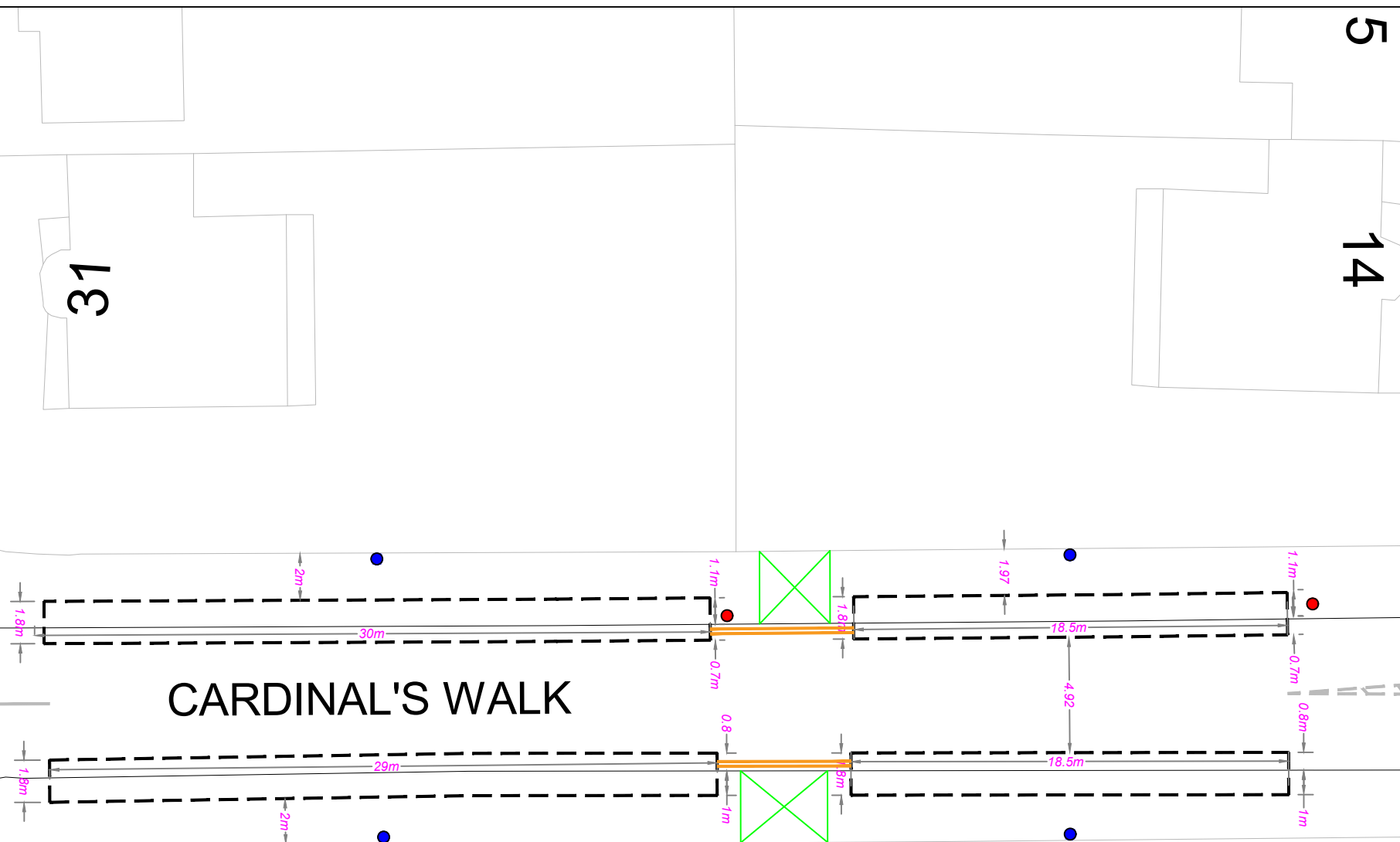
This Order introduces a length of school keep clear markings on the south side of Colne Road outside Twickenham Primary Academy.

The days of the week and the hours of the day during which the markings are in operation (including the days when they are not in operation) remain as they were specified in TMO 2012/34.

CARDINAL'S WALK

NO ENTRY

CARDINAL'S WALK



5
14

31

13

33

Key:

- New short based posts
- Existing Lamp columns and posts

In marked bays

New footway parking signs on New short based posts

REVISION	AMENDMENT	T.S 06.2018 DRAWN BY AND DATE	L.F 06.2018 DESIGNED BY AND DATE	L.F 06.2018 CHECKED BY AND DATE	M.T 06.2018 APPROVED BY AND DATE
-	-	-	-	-	-

LONDON BOROUGH OF RICHMOND UPON THAMES

DRAFT	<input checked="" type="checkbox"/>	SCALE (AT A3 SIZE)
ISSUE	<input checked="" type="checkbox"/>	
		NTS

CLIENT LONDON BOROUGH OF RICHMOND UPON THAMES

PROJECT Cardinal's Walk – Footway Parking

DRAWING TITLE Footway Parking

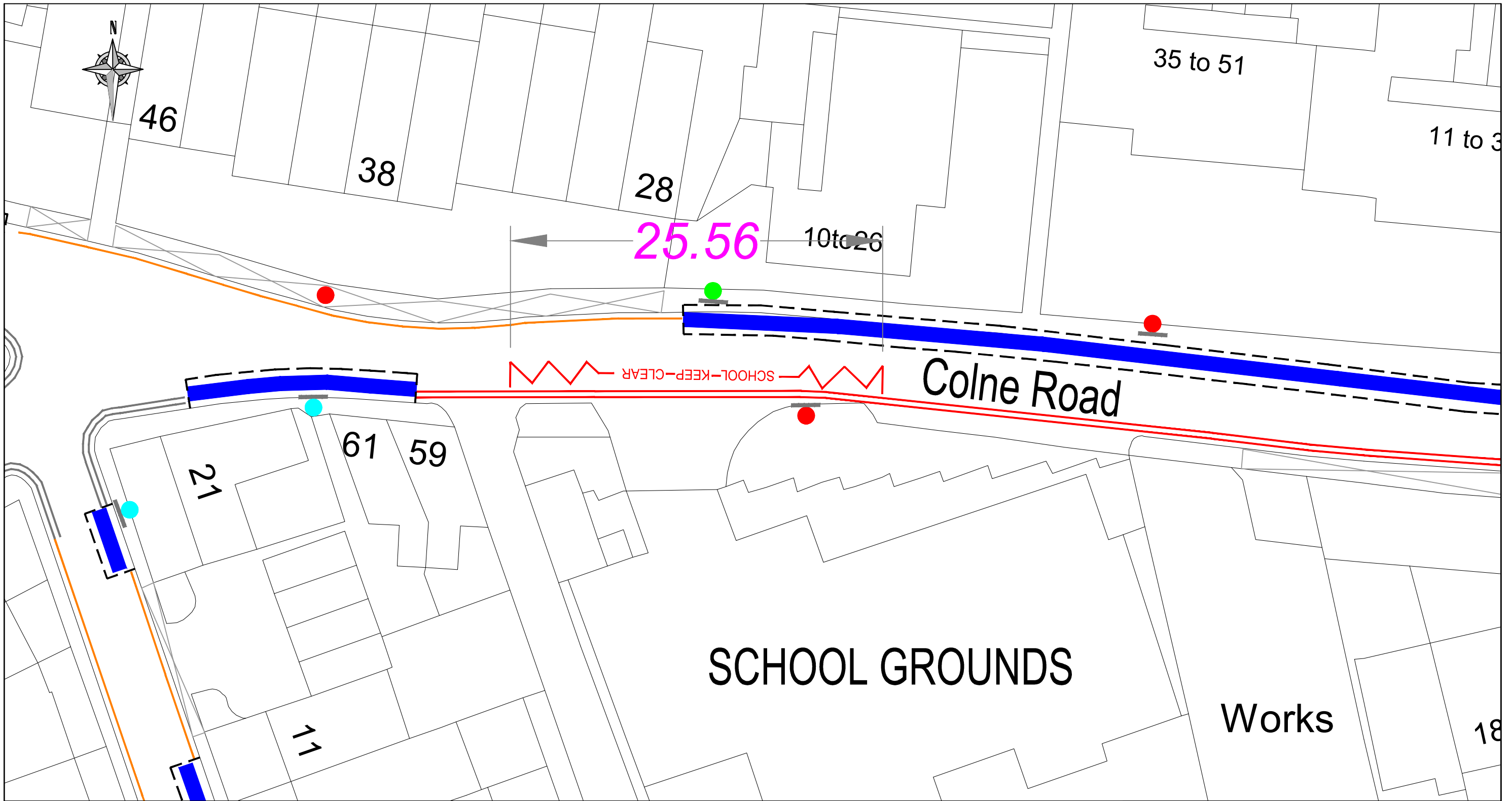
ISSUING OFFICE TWICKENHAM

TELEPHONE 020 88911411

DRAWING NUMBER CW-FP-001-A

REVISION -


"This map is reproduced from Ordnance Survey material with the permission of the Controller of Her Majesty's Stationery Office © Crown copyright. Unauthorised reproduction infringes Crown copyright and may lead to prosecution or civil proceedings 100019441 [2018]."



KEY:

 SCHOOL KEEP CLEAR

-	-	C.R-W Feb 2018 DRAWN BY AND DATE	C.R-W Feb 2018 DESIGNED BY AND DATE	M.P Feb 2018 CHECKED BY AND DATE	M.T Feb 2018 APPROVED BY AND DATE
REVISION	AMENDMENT				

	DRAFT	<input checked="" type="checkbox"/>	SCALE
	ISSUE	<input checked="" type="checkbox"/>	N.T.S

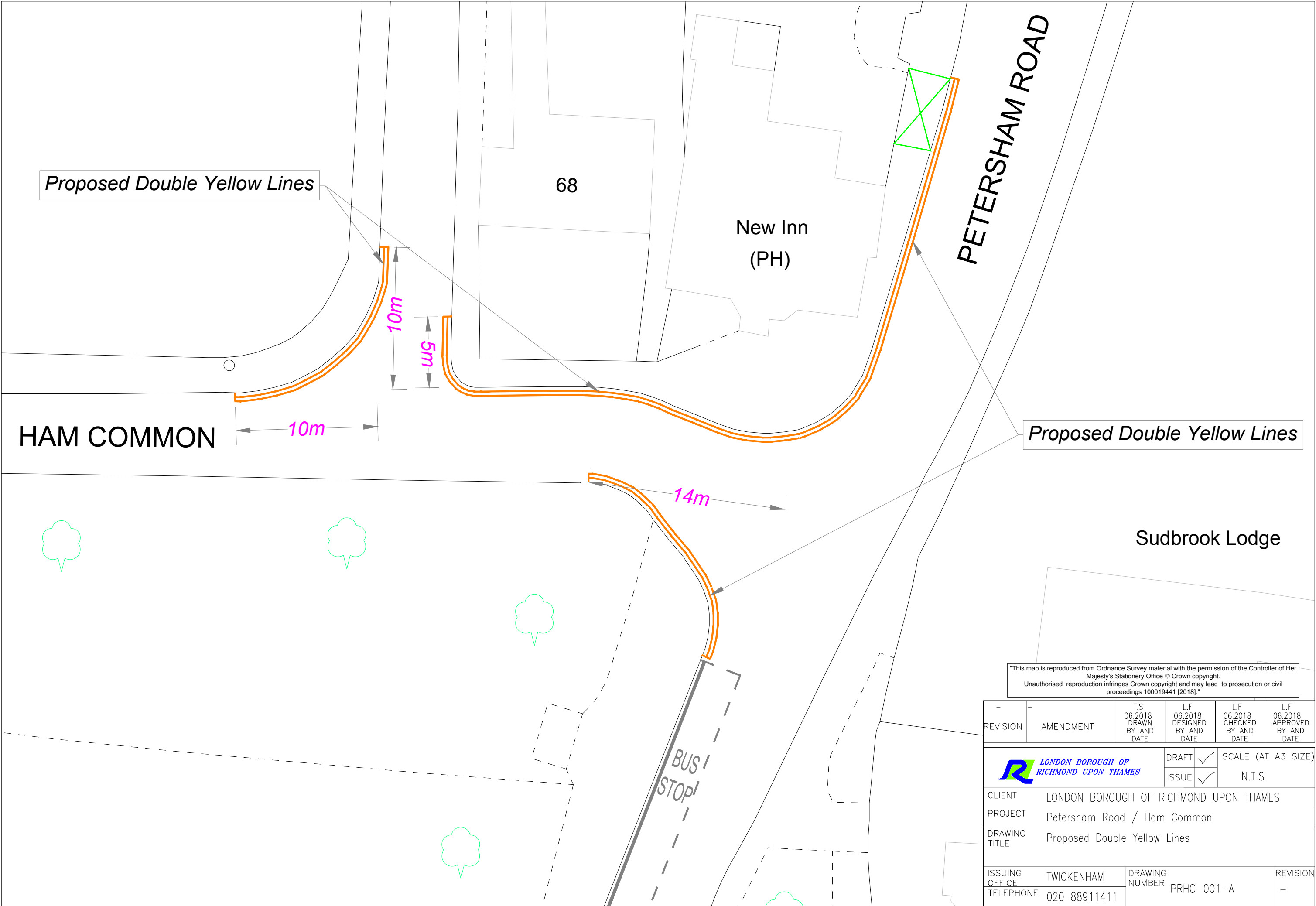
CLIENT LONDON BOROUGH OF RICHMOND UPON THAMES

PROJECT WEST TWICKENHAM CPZ DESIGN

DRAWING TITLE IMPLEMENTATION PLAN
ZONE WT / MON-SAT 8.30am-6.30pm

ISSUING OFFICE TWICKENHAM	DRAWING NUMBER CPZ-WT-A-01	REVISION -
TELEPHONE 020 88911411		

"This map is reproduced from Ordnance Survey material with the permission of the Controller of Her Majesty's Stationery Office © Crown copyright. Unauthorised reproduction infringes Crown copyright and may lead to prosecution or civil proceedings 100019441 [2018]."



Proposed Double Yellow Lines

Proposed Double Yellow Lines

HAM COMMON

PETERSHAM ROAD

68

New Inn
(PH)

Sudbrook Lodge

10m

5m

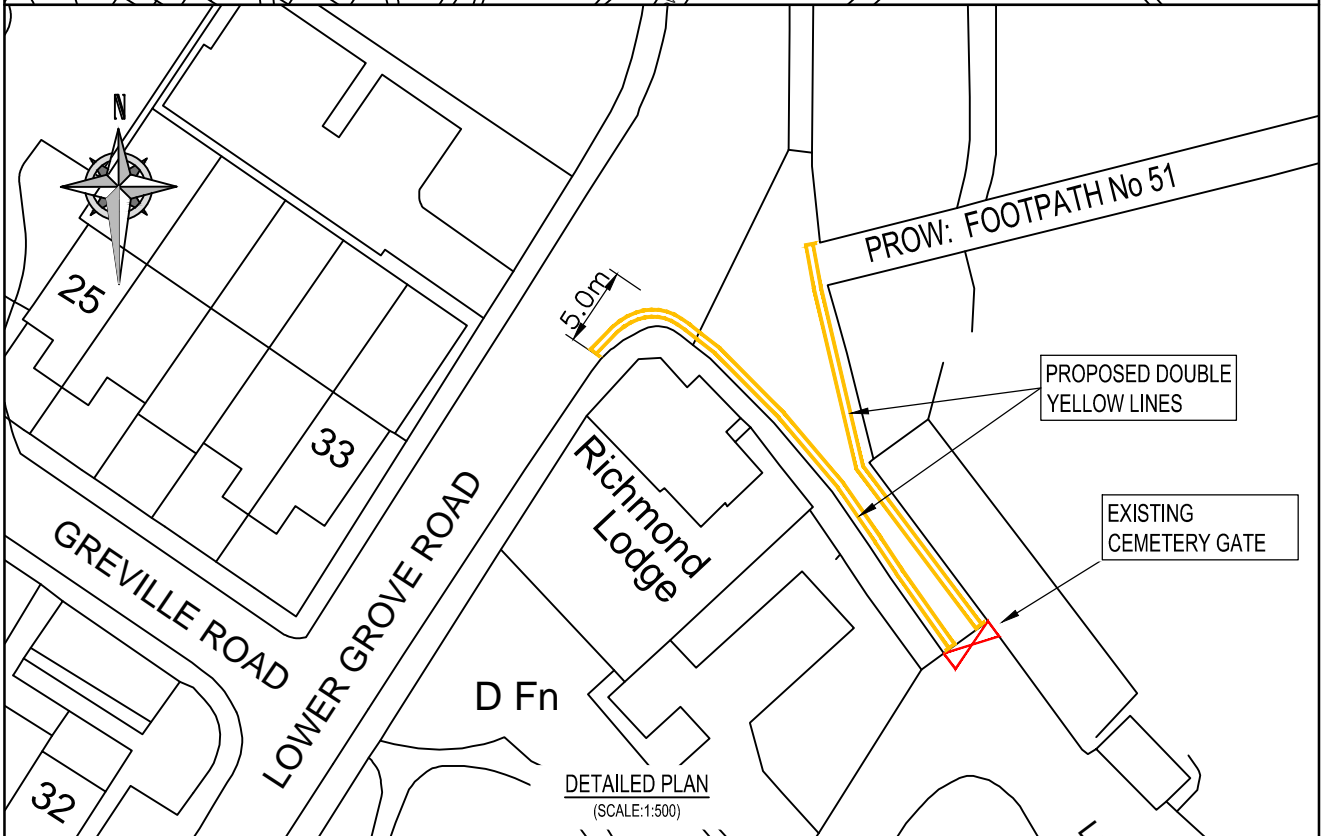
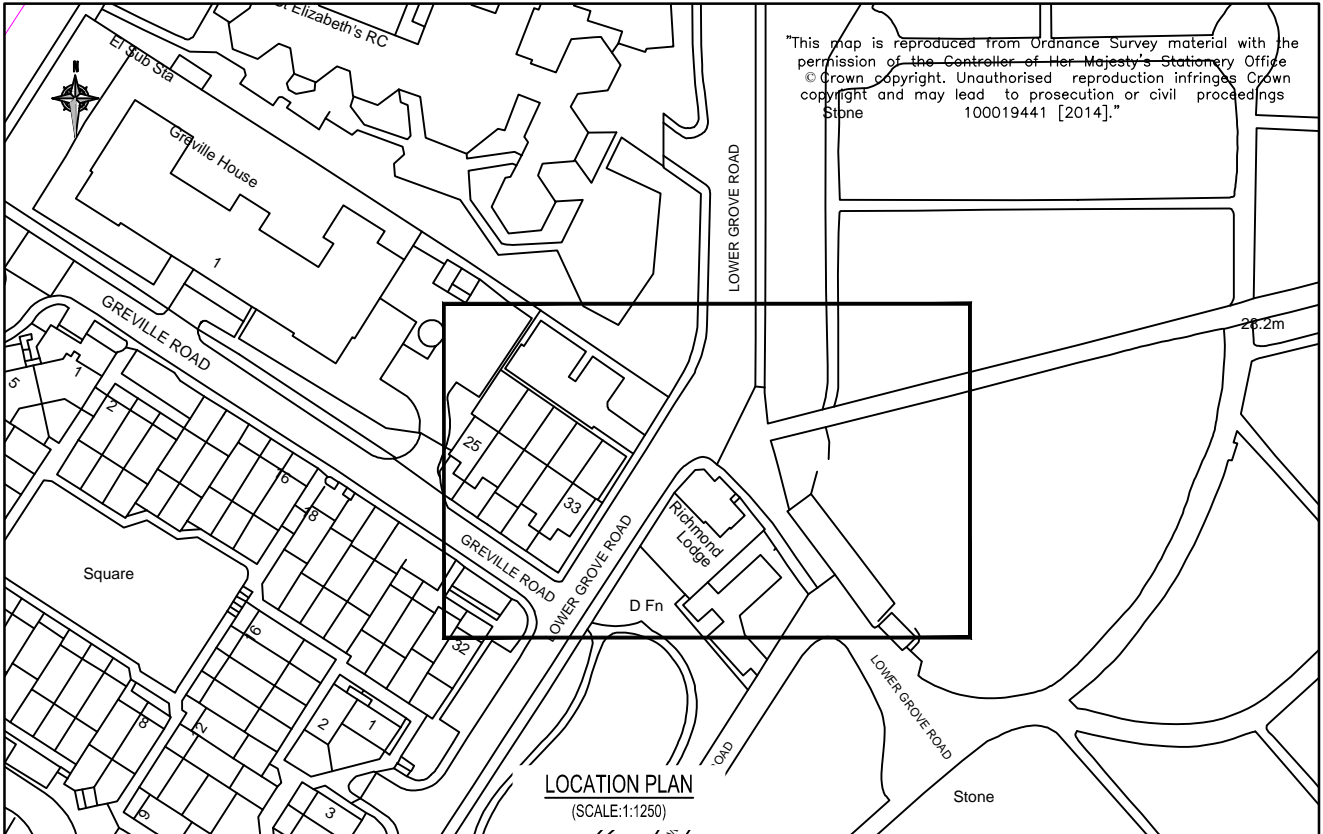
10m

14m

BUS
STOP

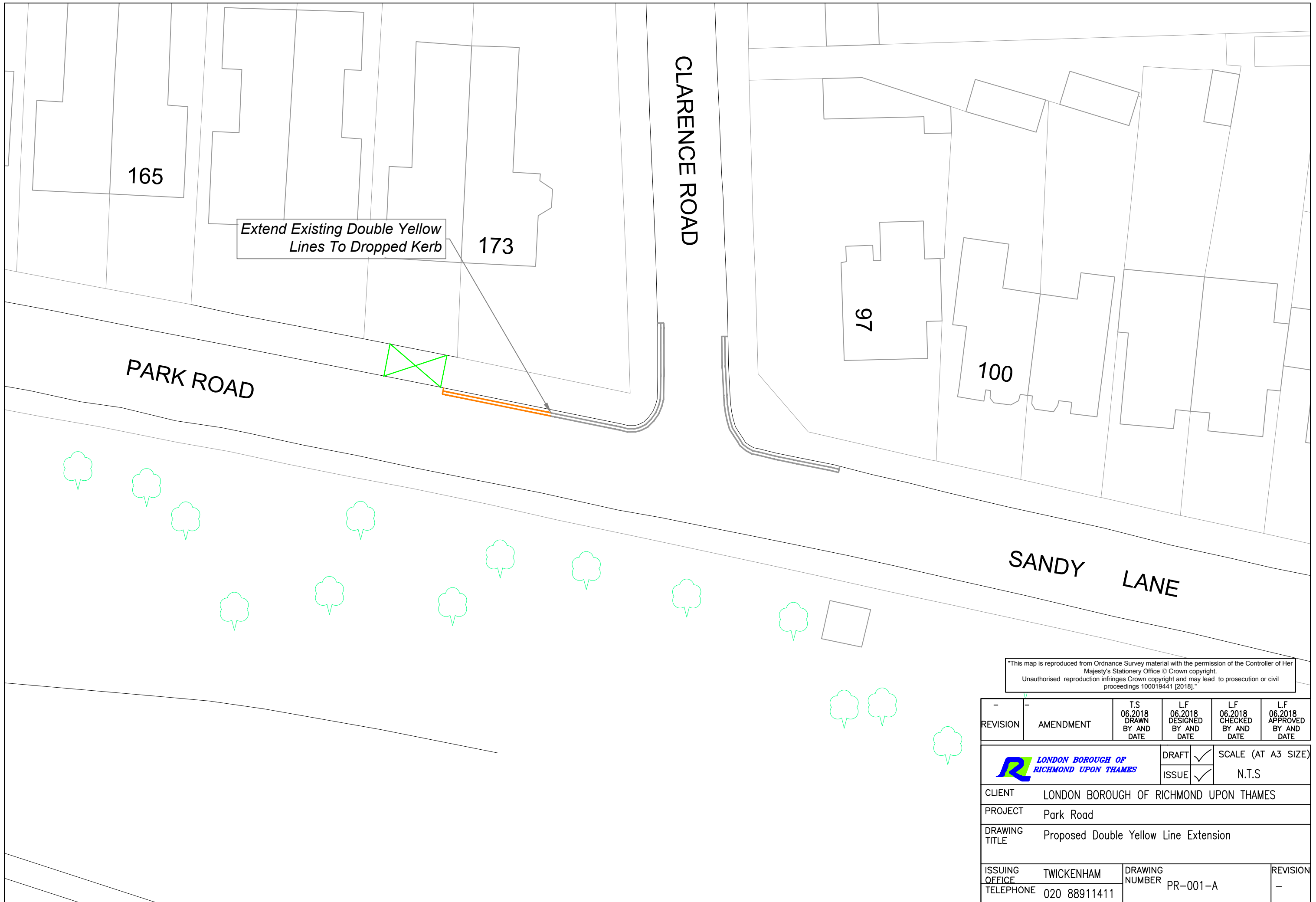
"This map is reproduced from Ordnance Survey material with the permission of the Controller of Her Majesty's Stationery Office © Crown copyright. Unauthorised reproduction infringes Crown copyright and may lead to prosecution or civil proceedings 100019441 [2018]."

REVISION	AMENDMENT	T.S. 06.2018 DRAWN BY AND DATE	L.F. 06.2018 DESIGNED BY AND DATE	L.F. 06.2018 CHECKED BY AND DATE	L.F. 06.2018 APPROVED BY AND DATE
-	-				
			DRAFT	<input checked="" type="checkbox"/>	SCALE (AT A3 SIZE)
			ISSUE	<input checked="" type="checkbox"/>	N.T.S
CLIENT	LONDON BOROUGH OF RICHMOND UPON THAMES				
PROJECT	Petersham Road / Ham Common				
DRAWING TITLE	Proposed Double Yellow Lines				
ISSUING OFFICE	TWICKENHAM	DRAWING NUMBER	PRHC-001-A		REVISION
TELEPHONE	020 88911411				-



CLIENT	LONDON BOROUGH OF RICHMOND UPON THAMES		
PROJECT	LOWER GROVE ROAD/CEMETERY ENTRANCE		
DRAWING TITLE	PROPOSED DOUBLE YELLOW LINES		
ISSUING OFFICE	TWICKENHAM	DRAWING NUMBER	REVISION
TELEPHONE	020 88911411	1049-CS-GL-497907	

					Draft	
					Issue	✓
					Scale (at A4 size)	
REVISION	TJM 09.11.15 DRAWN BY & DATE	RWP 09.11.15 DESIGNED BY & DATE	MP 09.11.15 CHECKED BY & DATE	MT 09.11.15 APPROVED BY & DATE	AS SHOWN	



Extend Existing Double Yellow Lines To Dropped Kerb

"This map is reproduced from Ordnance Survey material with the permission of the Controller of Her Majesty's Stationery Office © Crown copyright. Unauthorised reproduction infringes Crown copyright and may lead to prosecution or civil proceedings 100019441 [2018]."

REVISION	AMENDMENT	T.S 06.2018 DRAWN BY AND DATE	L.F 06.2018 DESIGNED BY AND DATE	L.F 06.2018 CHECKED BY AND DATE	L.F 06.2018 APPROVED BY AND DATE
-	-				
			DRAFT	<input checked="" type="checkbox"/>	SCALE (AT A3 SIZE)
			ISSUE	<input checked="" type="checkbox"/>	N.T.S
CLIENT		LONDON BOROUGH OF RICHMOND UPON THAMES			
PROJECT		Park Road			
DRAWING TITLE		Proposed Double Yellow Line Extension			
ISSUING OFFICE	TWICKENHAM	DRAWING NUMBER		PR-001-A	REVISION
TELEPHONE	020 88911411				-

SANDY LANE

Proposed New Crossing Point With Tactile Paving

239

Extend Existing Double Yellow Lines

241


2m

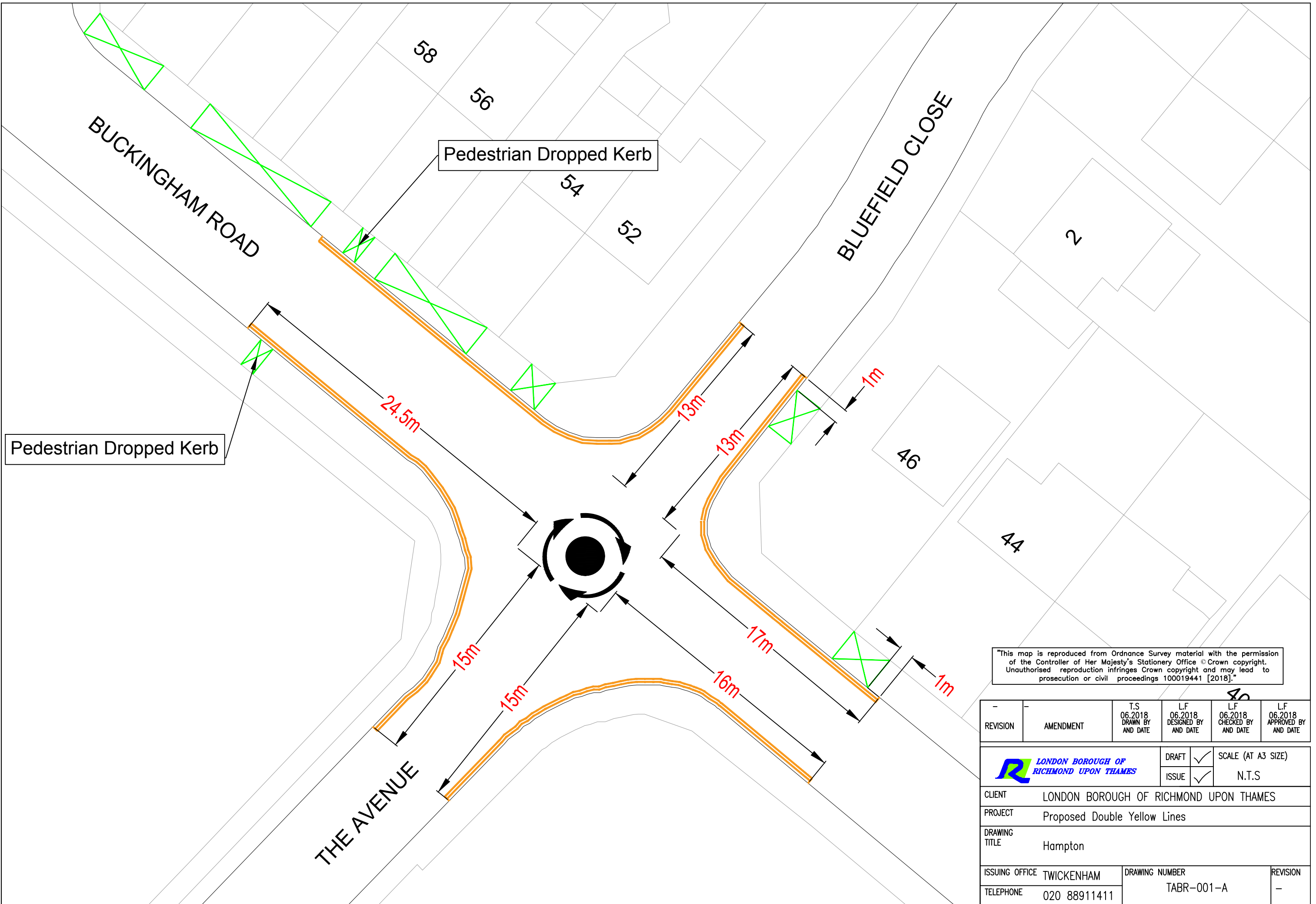
0.80

7.8m

She

"This map is reproduced from Ordnance Survey material with the permission of the Controller of Her Majesty's Stationery Office © Crown copyright. Unauthorised reproduction infringes Crown copyright and may lead to prosecution or civil proceedings 100019441 [2018]."

REVISION	AMENDMENT	T.S 06.2018 DRAWN BY AND DATE	L.F 06.2018 DESIGNED BY AND DATE	L.F 06.2018 CHECKED BY AND DATE	L.F 06.2018 APPROVED BY AND DATE
-	-				
			DRAFT	<input checked="" type="checkbox"/>	SCALE (AT A3 SIZE)
			ISSUE	<input checked="" type="checkbox"/>	N.T.S
CLIENT	LONDON BOROUGH OF RICHMOND UPON THAMES				
PROJECT	Sandy Lane				
DRAWING TITLE	Proposed Double Yellow Lines Proposed Crossing				
ISSUING OFFICE	TWICKENHAM	DRAWING NUMBER	SL-001-A		REVISION
TELEPHONE	020 88911411				-



"This map is reproduced from Ordnance Survey material with the permission of the Controller of Her Majesty's Stationery Office © Crown copyright. Unauthorised reproduction infringes Crown copyright and may lead to prosecution or civil proceedings 100019441 [2018]."

REVISION	AMENDMENT	T.S 06.2018 DRAWN BY AND DATE	LF 06.2018 DESIGNED BY AND DATE	LF 06.2018 CHECKED BY AND DATE	LF 06.2018 APPROVED BY AND DATE
-	-				
			DRAFT	<input checked="" type="checkbox"/>	SCALE (AT A3 SIZE)
			ISSUE	<input checked="" type="checkbox"/>	N.T.S
CLIENT		LONDON BOROUGH OF RICHMOND UPON THAMES			
PROJECT		Proposed Double Yellow Lines			
DRAWING TITLE		Hampton			
ISSUING OFFICE		DRAWING NUMBER		REVISION	
TWICKENHAM		TABR-001-A		-	
TELEPHONE		020 88911411			