

ROAD TRAFFIC REGULATION ACT 1984

THE LONDON BOROUGH OF RICHMOND UPON THAMES (WAITING AND LOADING RESTRICTION)
(CIVIL ENFORCEMENT AREA) (AMENDMENT No. **) ORDER 201***CHELSEA CLOSE, CROSS STREET, EASTBANK ROAD AND HIGH STREET, HAMPTON HILL
MANOEL ROAD AND STAINES ROAD, TWICKENHAM**

(Reference 13/127)

1. The Council of the London Borough of Richmond upon Thames proposes to make the above Order under sections 6 and 124 of, and Part IV of Schedule 9 to, the Road Traffic Regulation Act 1984, as amended.
2. The general effect of the Order will be to introduce waiting restrictions "at any time", at the junction of Chelsea Close, Cross Street, Eastbank Road, High Street (Hampton Hill), Manoel Road and Staines Road as specified in the Schedule to this Notice.
3. Copies of the proposed Order, a plan showing the location and effect of the proposals and the Council's Statement of Reasons for proposing to make the Order:-
 - (a) can be inspected, quoting Reference 13/127, at the Civic Centre (Central Reception, ground floor), 44 York Street, Twickenham between 9.15am and 5pm on Mondays to Fridays, except for Bank and other public holidays; and
 - (b) may be viewed on the Council's web-site at http://www.richmond.gov.uk/public_notices.htm
4. Persons wishing to object to or support the proposals or any part thereof should write to the Highway Infrastructure Manager, Civic Centre, 44 York Street, Twickenham TW1 3BZ to be received on or by 18 October 2013 giving the grounds of their objection. Emails may be sent to highwaysandtransport@richmond.gov.uk.

ANDREW DARVILL
Assistant Director, Traffic and Transport

Dated 27 September 2013



SCHEDULE

'AT ANY TIME' WAITING RESTRICTIONS

Chelsea Close

- (a) the north-west side, from Cross Street south-west for a distance of 6 metres;
- (b) the south-east side, from Cross Street south-west for a distance of 8.6 metres;

Cross Street

- (a) the north-east side
 - (i) from High Street, Hampton Hill north-west for a distance of 10 metres;
 - (ii) from Eastbank Road south-east for a distance of 11 metres;
- (b) the south-west side
 - (i) from High Street, Hampton Hill to 5 metres north-west of Chelsea Close;
 - (ii) from Eastbank Road south-east for a distance of 6 metres;

Eastbank Road

- (a) the north-west side, from opposite a point 4 metres north-east of Cross Street to opposite a point 4.5 metres south-west of Cross Street;
- (b) the south-east side, from 4 metres north-east of Cross Street to 4.5 metres south-west of Cross Street;

High Street, Hampton Hill, the north-west side, from 4 metres north-east of Cross Street to 4.5 metres south-west of Cross Street

Manoel Road, both sides, from the junction of Staines Road north-westwards for a distance of 12 metres.

Staines Road, the north-west side, from 12 metres north-east of Manoel Road to 12 metres south-west of Manoel Road.

TRAFFIC MANAGEMENT ORDER

THE LONDON BOROUGH OF RICHMOND UPON THAMES (WAITING AND LOADING RESTRICTION) (CIVIL ENFORCEMENT AREA) (AMENDMENT No. **) ORDER 201*

Made: ** *** 201*

Coming into operation: ** *** 201*

The Council of the London Borough of Richmond upon Thames, having consulted the Commissioner of Police of the Metropolis, in exercise of the powers conferred by Sections 6 and 124 of, and Part IV of Schedule 9 to, the Road Traffic Regulation Act 1984(a), as amended, and all other enabling powers hereby make the following Order—

1. This Order shall come into operation on ** *** 201* and may be cited as the London Borough of Richmond upon Thames (Waiting and Loading) (Civil Enforcement Area) (No. **) (Amendment No. **) Order 2013.
2. (1) In this Order the expression “enactment” means any enactment whether public, general or local and includes any order, bye-law, rule, regulation, scheme or other instrument having effect by virtue of an enactment.
- (2) Any reference in this Order to any enactment shall be construed as a reference to that enactment as amended, applied, consolidated, re-enacted by or as having effect by virtue of any subsequent enactment.
- (3) The Interpretation Act 1978(b) shall apply for the interpretation of this Order as it applies for the interpretation of an Act of Parliament.
2. Without prejudice to the validity of anything done or to any liability incurred in respect of any act or omission before the coming into operation of this Order, the London Borough of Richmond upon Thames (Waiting and Loading Restriction) (Civil Enforcement Area) (Consolidation No. 8) Order 2008(c), as amended, shall have effect as though:-
 - (a) for the item numbered 338 and 664 in Schedule 1 to that Order there were substituted the items similarly numbered and set out in columns 1, 2 and 3 of Schedule 1 to this Order, and
 - (b) there were added to the items in Schedule 1 to that Order the item numbered **** and set out in columns 1, 2 and 3 of Schedule 2 to this Order.

Dated ** *** 201*

Assistant Director, Traffic and Transport
(The officer appointed for this purpose)

(a) 1984 c. 27. (b) 1978 c. 30. (c) 2011/12.
(c) 2008/38 – the relevant amending orders are 2011/3.

SCHEDULE 1
(See Article 3(a))

ITEMS TO BE SUBSTITUTED IN SCHEDULE 1 [to 2008/38]
RESTRICTED STREETS

1 Item No.	2 Street	3 Prescribed hours - see Schedule 3 [to 2008/38]
338	<p>High Street, Hampton Hill:</p> <p>(a) the north-west side:</p> <ul style="list-style-type: none"> (i) from its junction with Uxbridge Road to a point opposite the party wall of Nos 3 and 5 High Street; (ii) from a point 8 metres south-west of the south-western kerb-line of Park Place to a point 8 metres north-east of the north-eastern kerb-line of Park Place; (iii) from a point 8 metres north-east of the north-eastern kerb-line of Park Place to a point 2 metres south-west of the south-western kerb-line of Cross Street; (iv) from a point 2 metres south-west of the south-western kerb-line of Cross Street to a point 1 metre north-east of the north-eastern kerb-line of Cross Street; (v) from a point 1 metre north-east of the north-eastern kerb-line of Cross Street to a point 10 metres south-west of the south-western kerb-line of Taylor Close (vi) from a point 10 metres south-west of the south-western kerb-line of Taylor Close to a point 10 metres north-east of the north-eastern kerb-line of Taylor Close; (vii) from a point 10 metres north-east of the north-eastern kerb-line of Taylor Close to a point opposite the party wall of Nos 173B and 175 High Street; (viii) from a point opposite the party wall of Nos 173B and 175 High Street to a point 30.6 metres south-west of the party wall of Nos 185 and 187 High Street; (ix) from a point 10.5 metres south-west of the party wall of Nos 185 and 187 High Street to a point opposite the party wall of Nos 215 and 217 High Street; (x) from a point opposite the party wall of Nos 215 and 217 High Street to its junction with Wellington Road, Hampton Hill; <p>(b) the south-east side:</p> <ul style="list-style-type: none"> (i) from its junction with Uxbridge Road to a point opposite the party wall of Nos 3 and 5 High Street; (ii) from the north-eastern kerb-line of Park Place to a point 15 metres south-west of the party wall of Nos 38 and 40 High Street; 	<p>G</p> <p>A</p> <p>S</p> <p>A</p> <p>S</p> <p>A</p> <p>S</p> <p>P</p> <p>A</p> <p>G</p> <p>G</p> <p>S</p>

1 Item No.	2 Street	3 Prescribed hours - see Schedule 3 [to 2008/38]
664	<ul style="list-style-type: none"> (iii) from a point opposite the party wall of Nos 38 and 40 High Street to the south-western kerb-line of Cricket Lane, Hampton Hill; (iv) from the north-eastern kerb-line of Cricket Lane north-eastwards for a distance of 7.5 metres; (v) from a point 7.5 metres north-east of the north-eastern kerb-line of Cricket Lane north-eastwards for a distance of 10 metres; (vi) from a point 17.5 metres north-east of the north-eastern kerb-line of Cricket Lane to south-western end of the lay-by located outside Nos 68-78 High Street; (vii) the lay-by located outside Nos 68-78 High Street, having a length of 12.5 metres; (viii) from the north-eastern end of the lay-by located outside Nos 68-78 High Street north-eastwards for a distance of 5 metres; (ix) from a point 5 metres north-east of the north-eastern end of the lay-by located outside Nos 68-78 High Street to a point 10 metres south-west of the south-western kerb-line of Parkside, Hampton Hill; (x) from a point 10 metres south-west of the south-western kerb-line of Parkside to a point opposite the south-western boundary of No 126 High Street; (xi) from a point opposite the south-western boundary of No 126 High Street to its junction with Wellington Road. 	<ul style="list-style-type: none"> S A S A V A S A G
	Staines Road, Twickenham:	
	(a) the north and north-west side:	
	(i) from a point 14 metres east of the north-eastern kerb-line of Briar Road, Twickenham to a point opposite the westernmost wall of No 6 Staines Road;	A
	(ii) from a point 7 metres west of the south-western kerb-line of Briar Road to a point opposite the westernmost wall of No 6 Staines Road;	G
	(iii) from the north-eastern kerb-line of the south-west to north-east arm of Camac Road, Twickenham eastwards for a distance of 10 metres;	A
	(iv) from a point opposite the eastern flank wall of No 46 Staines Road to a point opposite the party wall of Nos 90B and 90C Staines Road;	A
	(v) from a point opposite the western flank wall of No 100 Staines Road to a point opposite the party wall of Nos 230 and 232 Staines Road;	A

1 Item No.	2 Street	3 Prescribed hours - see Schedule 3 [to 2008/38]
	<p>(vi) from a point 12 metres north-east of the north-eastern kerb-line of Manoel Road to a point 12 metres south-west of the south-western kerb-line;</p> <p>(vii) from a point opposite the party wall of Nos 500 and 502 Staines Road to its junction with Twickenham Road, Hanworth;</p> <p>(b) the south and south-east side:</p> <p>(i) from the south-western kerb-line of First Cross Road, Twickenham to a point opposite the eastern flank wall of No 46 Staines Road;</p> <p>(ii) from a point opposite the eastern flank wall of No 46 Staines Road to a point 10 metres south-west of the north-western kerb-line of Third Cross Road, Twickenham;</p> <p>(iii) from a point 10 metres north-east of the north-eastern kerb-line of Elmsleigh Road, Twickenham to a point 10 metres south-west of the north-western kerb-line of Elmsleigh Road;</p> <p>(iv) from a point 10 metres north-east of the north-eastern kerb-line of Gothic Road, Twickenham to a point opposite the party wall of Nos 157 and 159 Staines Road;</p> <p>(v) from a point opposite the south-western flank wall of No 207 Staines Road to a point opposite the north-eastern flank wall of No 213 Staines Road;</p> <p>(vi) from a point 26 metres south-west of its junction with Sixth Cross Road, Twickenham to a point opposite the common boundary of Nos 492 and 494 Staines Road.</p>	<p>A</p> <p>A</p> <p>G</p> <p>A</p> <p>A</p> <p>A</p> <p>A</p> <p>A</p>

SCHEDULE 2
(See Article 3(b))

ITEMS TO BE ADDED IN SCHEDULE 1 [to 2008/38]
RESTRICTED STREETS

1 Item No.	2 Street	3 Prescribed hours - see Schedule 3 [to 2008/38]
**	<p>Chelsea Close, Hampton Hill</p> <p>(a) the north-west side</p> <p>(i) from the south-western kerb-line of Cross Street to a point 6 metres south-west of that kerb-line;</p> <p>(b) the south-east side</p> <p>(i) from the south-western kerb-line of Cross Street to a point 8.6 metres south-west of that kerb-line.</p>	A
**	<p>Cross Street, Hampton Hill</p> <p>(a) the north-east side</p> <p>(i) from the north-western kerb-line of High Street, Hampton Hill to a point 10 metres north-west of that kerb-line;</p> <p>(ii) from the south-eastern kerb-line of Eastbank Road to a point 11 metres south-east of that kerb-line;</p> <p>(b) the south-west side</p> <p>(i) from the north-western kerb-line of High Street, Hampton Hill to a point 5 metres north-west of the north-western kerb-line of Chelsea Close;</p> <p>(ii) from the south-eastern kerb-line of Eastbank Road to a point 6 metres south-east of that kerb-line</p>	A
**	<p>Eastbank Road, Hampton Hill</p> <p>(a) the north-west side</p> <p>(i) from opposite a point 4 metres north-east of the north-eastern kerb-line of Cross Street to opposite a point 4.5 metres south-west of the south-western kerb-line of Cross Street;</p> <p>(b) the south-east side</p> <p>(i) from a point 4 metres north-east of the north-eastern kerb-line of Cross Street to a point 4.5 metres south-west of the south-western kerb-line of Cross Street.</p>	A
**	<p>Manoel Road, Twickenham:</p> <p>from the north-western kerb-line of Staines Road to a point 12 metres north-west of that kerb-line.</p>	A

EXPLANATORY NOTE

(This Note is not part of the Order but is intended to indicate its general purport.)

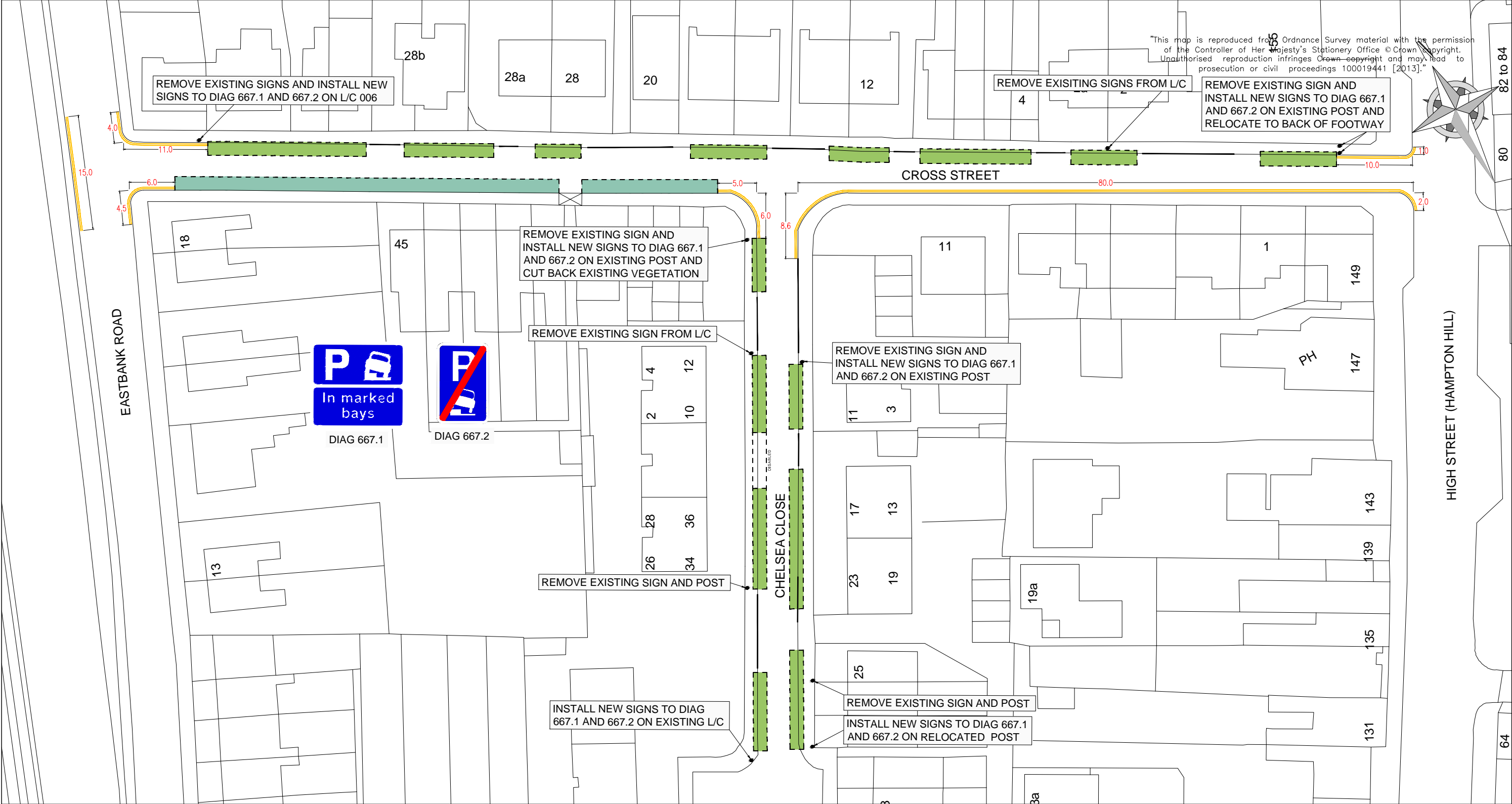
This Order introduces waiting restrictions (“no waiting at any time”) in lengths of Chelsea Close, Cross Street, High Street (Hampton Hill), Eastbank Road, Manoel Road and Staines Road.

STATEMENT OF REASONS




As a result of a consultation with local residents and various local bodies concerned with dangerous obstructive parking:-

- (a) in Cross Street, the Council of the London Borough of Richmond upon Thames, propose to introduce ‘at any time’ waiting restrictions in this street and at its junctions with Chelsea Close, Eastbank Road and High Street, Hampton Hill.
- (b) at the junction of Manoel Road with Staines Road, the Council of the London Borough of Richmond upon Thames, propose to introduce ‘at any time’ waiting restrictions at this junction.

These schemes is to prevent parked cars from obstructing two way traffic flows, allowing a free flow of traffic, which will also improve the safety of road users and pedestrians.




KEY:

-  FULL CARRIAGEWAY PARKING BAY
-  PARTIAL FOOTWAY EXEMPTION PARKING BAY
-  PROPOSED "AT ANY TIME" WAITING RESTRICTION

NOTES:

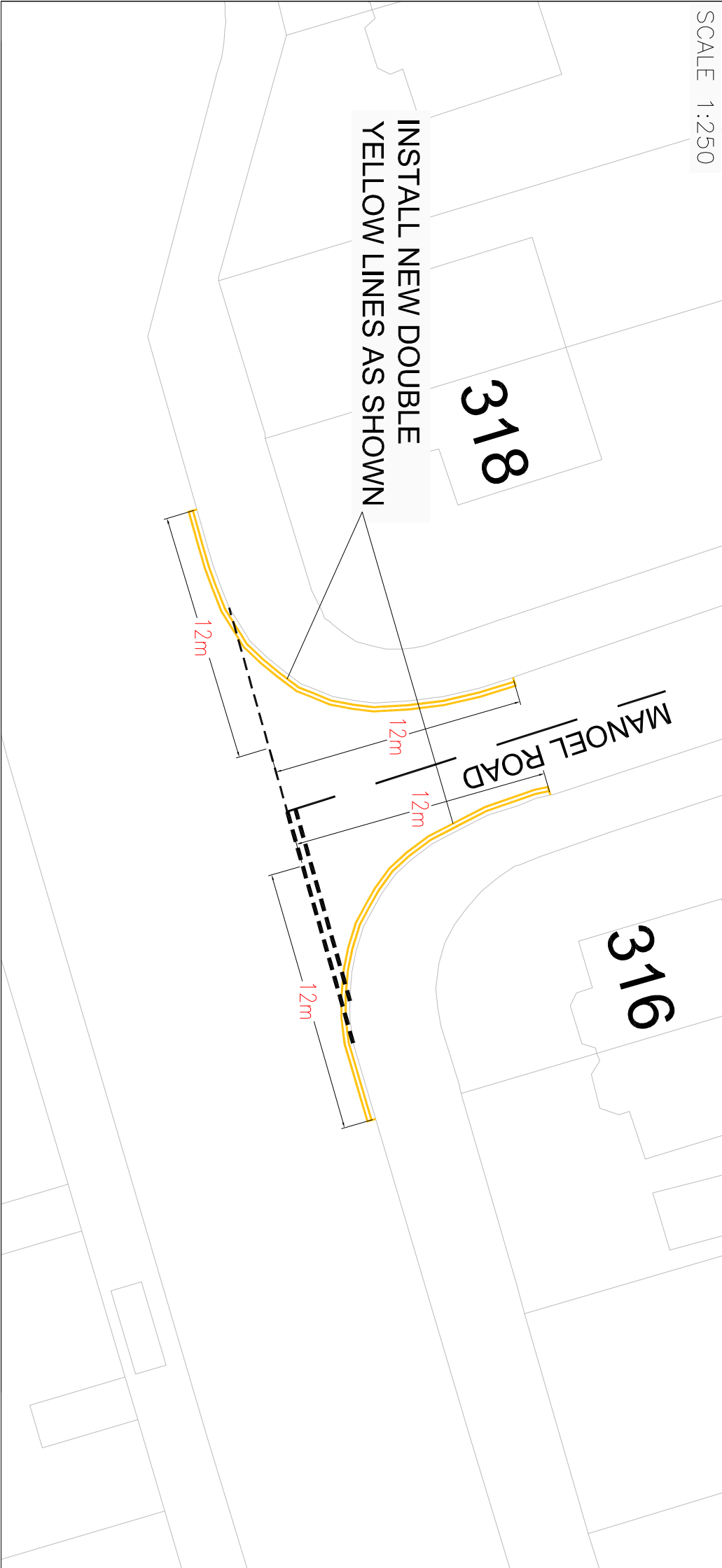
- PARKING BAYS MATCH EXISTING LAYOUT RESULTING IN NO LOSS OF PARKING ON CROSS STREET / CHELSEA CLOSE
- BAYS POSITIONED TO MAINTAIN 3M OF CARRIAGEWAY PROVIDING ACCESS FOR EMERGENCY SERVICE VEHICLES

A	-	AP 21/08/13	AP 21/08/13	RP 21/08/13	MT 21/08/13
REVISION	AMENDMENT	DRAWN BY AND DATE	DESIGNED BY AND DATE	CHECKED BY AND DATE	APPROVED BY AND DATE
 LONDON BOROUGH OF RICHMOND UPON THAMES			DRAFT	<input checked="" type="checkbox"/>	SCALE (AT A3 SIZE) 1:500
			ISSUE	<input type="checkbox"/>	
CLIENT	LONDON BOROUGH OF RICHMOND UPON THAMES				
PROJECT	CROSS STREET, HAMPTON HILL				
DRAWING TITLE	EMERGENCY SERVICE ACCESS				
ISSUING OFFICE	TWICKENHAM	DRAWING NUMBER			REVISION
TELEPHONE	020 88911411	1049-DD-GL-472453			

SCALE 1:1250

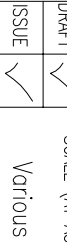


SCALE 1:250



"This map is reproduced from Ordnance Survey material with the permission of the Controller of Her Majesty's Stationery Office © Crown copyright. Unauthorised reproduction infringes Crown copyright and may lead to prosecution or civil proceedings 100019441 [2012]."

REVISION	A	-	AMENDMENT	AP	24/07/13	AP	24/07/13	RP	24/07/13	MT	24/07/13
				DRAWN BY	AND DATE	DESIGNED BY	AND DATE	CHECKED BY	AND DATE	APPROVED BY	AND DATE



CLIENT	LONDON BOROUGH OF RICHMOND UPON THAMES									
PROJECT	MANOEL ROAD									
DRAWING TITLE	DOUBLE YELLOW LINES									
ISSUING OFFICE	TWICKENHAM	DRAWING NUMBER		MY_DYL_001						REVISION
TELEPHONE	020 88911411									A